

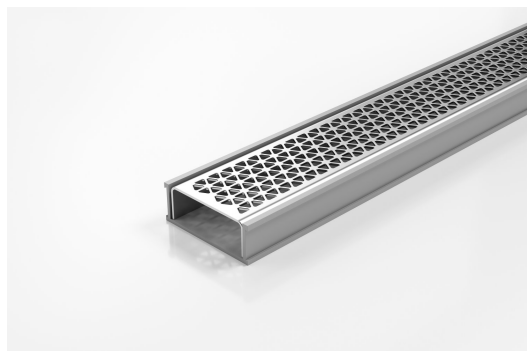


ARCHITECTURAL  
GRATES + DRAINS



# 65MNDG25

## Linear Drain



**Modular drainage kit with stainless steel grate, uPVC drainage channel and fittings**

The 65MND25 is a designer grate featuring a tessellated hexagonal design created by Marc Newson.

The grate(s) are manufactured from 316 marine grade stainless steel and the channel and fittings from uPVC.

Kits longer than 3000mm are available on request.

Please be aware that depending on the installation environment, for a pool installation or close to a surf beach, you may need to have your stainless steel grates electropolished.

**Refer to AS3500 for outlet pipe sizes specific to your installation.**

**Code** 65MNDG25

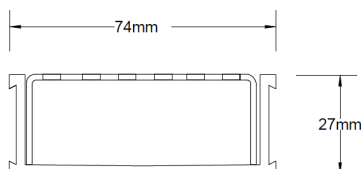
**Range** 65

**Grate Style** MND

**Category** Modular Kits

**Channel Material** uPVC

**Steel Grade** 316

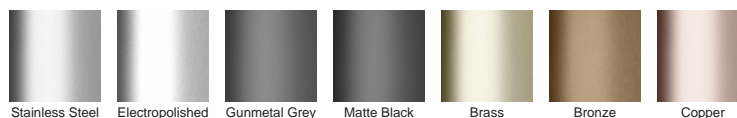


Grates longer than 1500mm supplied in sections. Tile Inserts longer than 1200mm supplied in sections. Channels over 3000mm supplied in sections with joiner. +/-2mm tolerance on dimensions.

### SPECIFICATIONS + DIMENSIONS

|                      |  |
|----------------------|--|
| <b>Channel Width</b> | 74mm   |
| <b>Channel Depth</b> | 27mm   |
| <b>Length(s)</b>     | 900mm 1000mm 1200mm 1500mm<br>1800mm 1900mm 2000mm 2100mm<br>2200mm 2400mm 2500mm 2700mm<br>3000mm |
| <b>Outlet Size</b>   | DN40, DN50   |

### STORMTECH COLOUR FINISHES



**Electroplate finishes subject to natural variation with time and local environment. Factors such as pools/surf beaches may require electropolishing. Contact us for suitability.**

### PRODUCT APPLICATIONS

- |                             |                            |
|-----------------------------|----------------------------|
| Bathroom Drainage           | Paved Area Drainage        |
| Aged / Health Care Drainage | Shower Drainage            |
| Balcony Drainage            | Multi-Residential Drainage |
| Courtyard / Patio Drainage  | Special Needs Drainage     |
| Pool and Spa Area Drainage  | Threshold Drainage         |
| Hospitality Drainage        | Suspended Slab Drainage    |



Copyright © Stormtech Pty Ltd. Patent 733361. Drawings not to scale, please use dimensions shown.  
Downloaded 22/06/2026 (please check for updates)

Visit **stormtech.com.au**  
for tools + inspiration.

Phone **1300 653 403**

Email **info@stormtech.com.au**