

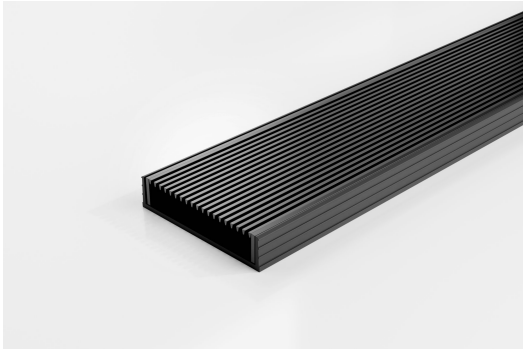


ARCHITECTURAL
GRATES + DRAINS



100ARGALLBL20

Linear Drain



100mm wide Architectural Stainless Steel grate with Black UPVC channel & Black grate.

The 100AR is the original premium architectural grate featuring a 2mm wire/2.5mm gap.

Modular site finish system, wedge wire grate, manufactured from 316 grade stainless steel (powder coated black) combined with a black UPVC channel.

Kits longer than 3000mm are available on request.

Black uPVC channel only suitable for Internal use only

Code 100ARGALLBL20

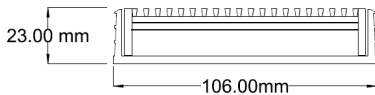
Range 100

Grate Style AR

Category Modular Kits

Channel Material uPVC

Steel Grade 316



Grates longer than 1500mm supplied in sections. Tile Inserts longer than 1200mm supplied in sections. Channels over 3000mm supplied in sections with joiner. +/-2mm tolerance on dimensions.

SPECIFICATIONS + DIMENSIONS

Channel Width	106mm
Channel Depth	23mm
Length(s)	900mm 1000mm 1200mm 1500mm 1800mm 2000mm 2200mm 2400mm 2700mm 3000mm
Outlet Size	DN40, DN50, DN80, DN100

STORMTECH COLOUR FINISHES



Electroplate finishes subject to natural variation with time and local environment. Factors such as pools/surf beaches may require electropolishing. Contact us for suitability.

PRODUCT APPLICATIONS

- | | |
|-----------------------------|----------------------------|
| Bathroom Drainage | Hospitality Drainage |
| Aged / Health Care Drainage | Paved Area Drainage |
| Balcony Drainage | Shower Drainage |
| Commercial Drainage | Multi-Residential Drainage |
| Courtyard / Patio Drainage | Special Needs Drainage |
| Pool and Spa Area Drainage | Threshold Drainage |

Copyright © Stormtech Pty Ltd. Patent 733361. Drawings not to scale, please use dimensions shown. Downloaded 22/06/2026 (please check for updates)



Visit stormtech.com.au
for tools + inspiration.

Phone **1300 653 403**

Email info@stormtech.com.au