



ARCHITECTURAL  
GRATES + DRAINS



# SQ100TRDN50

## Square Floor Waste

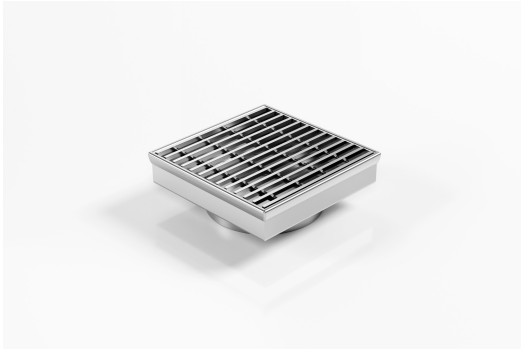
Square Floor waste with standard grate.

The SQ Range of floor waste units allow the integration of a standard floor waste with Stormtech linear drainage.

Floor waste measures 104mm x 104mm.

Please note that our TR grates have a non finished finish.

Available with 89mm, 76mm or 44mm outlet.



**Code** SQ100TRDN50

**Range** Square

**Grate Style** TR

**Category** Square Floor Waste

**Channel Material** Stainless Steel

**Steel Grade** 316

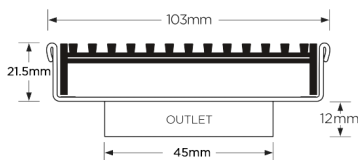
### SPECIFICATIONS + DIMENSIONS

|                      |       |
|----------------------|-------|
| <b>Channel Width</b> | 104mm |
| <b>Channel Depth</b> | 22mm  |
| <b>Length(s)</b>     | 104mm |
| <b>Outlet Size</b>   | DN50  |

### STORMTECH COLOUR FINISHES



Electroplate finishes subject to natural variation with time and local environment. Factors such as pools/surf beaches may require electropolishing. Contact us for suitability.



Grates longer than 1500mm supplied in sections. Tile Inserts longer than 1200mm supplied in sections. Channels over 3000mm supplied in sections with joiner. +/-2mm tolerance on dimensions.

### PRODUCT APPLICATIONS

Bathroom Drainage  
Hospitality Drainage  
Shower Drainage  
Multi-Residential Drainage

Copyright © Stormtech Pty Ltd. Patent 733361. Drawings not to scale, please use dimensions shown.  
Downloaded 19/04/2026 (please check for updates)



Visit [stormtech.com.au](http://stormtech.com.au)  
for tools + inspiration.

Phone **1300 653 403**

Email [info@stormtech.com.au](mailto:info@stormtech.com.au)