



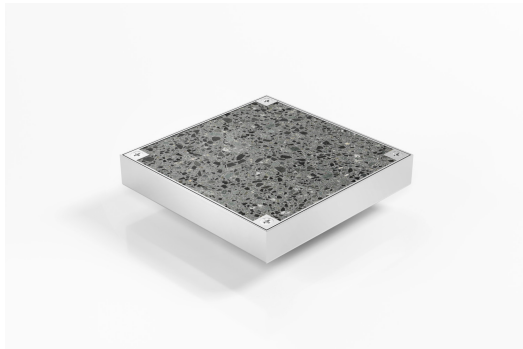
ARCHITECTURAL
GRATES + DRAINS



SQ100TiCL20DN100

Clean Out

Square Floor Waste



Code SQ100TiCL20DN100 Clean Out

Range Square

Grate Style Ti

Category Square Floor Waste

Channel Material Stainless Steel

Steel Grade 316

- Clean Out inspection points are the ideal solution where access to the drainage line is required
- The clear-out inspection point can be infilled with a solid tile giving an extra special effect.
- Manufactured in grade 316 stainless steel with a satin finish.
- Suitable for tiles up to 17mm thick.
- 4 screws to secure the tile insert to the channel with a square rubber pad added between the insert and the channel

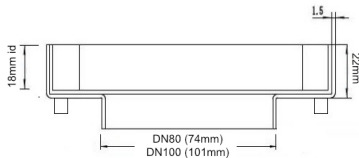
SPECIFICATIONS + DIMENSIONS

Channel Width	130mm
Channel Depth	22mm
Length(s)	130mm
Outlet Size	DN100

STORMTECH COLOUR FINISHES



Electroplate finishes subject to natural variation with time and local environment. Factors such as pools/surf beaches may require electropolishing. Contact us for suitability.



Grates longer than 1500mm supplied in sections. Tile Inserts longer than 1200mm supplied in sections. Channels over 3000mm supplied in sections with joiner. +/-2mm tolerance on dimensions.

PRODUCT APPLICATIONS

Bathroom Drainage

Copyright © Stormtech Pty Ltd. Patent 733361. Drawings not to scale, please use dimensions shown. Downloaded 22/06/2026 (please check for updates)



Visit stormtech.com.au
for tools + inspiration.

Phone **1300 653 403**

Email info@stormtech.com.au