

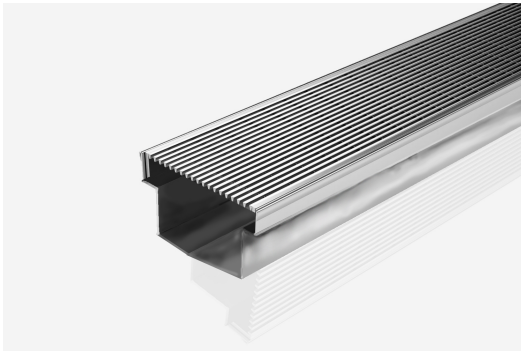


ARCHITECTURAL
GRATES + DRAINS



100ARi50MTL

Linear Drain



The 100ARi50MTL is a linear drainage system providing a solution for minimum stepdown requirement of 50mm in doorways.

Manufactured from sustainably sourced 316 marine grade stainless steel for durability, hygiene and luxurious visual appeal. This drainage is made to specified length with specified outlet position, featuring Stormtech's premium Architectural Grate (2mm wire/2.5mm gap).

Please be aware that for a pool installation or installation environment close to a surf beach, you may need to have your stainless steel grates electropolished.

Code 100ARi50MTL

Range 100

Grate Style AR

Category Made-to-Length

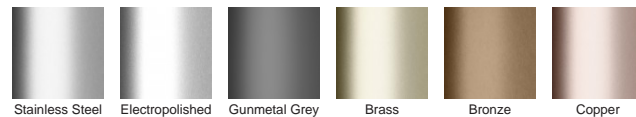
Channel Material Stainless Steel

Steel Grade 316

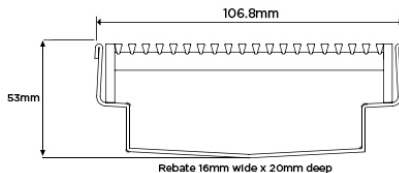
SPECIFICATIONS + DIMENSIONS

Channel Width	107mm
Channel Depth	53mm
Length(s)	As Required
Outlet Size	DN40, DN50, DN65, DN80

STORMTECH COLOUR FINISHES



Electroplate finishes subject to natural variation with time and local environment. Factors such as pools/surf beaches may require electropolishing. Contact us for suitability.



Grates longer than 1500mm supplied in sections. Tile Inserts longer than 1200mm supplied in sections. Channels over 3000mm supplied in sections with joiner. +/-2mm tolerance on dimensions.

PRODUCT APPLICATIONS

Bathroom Drainage	Hospitality Drainage
Aged / Health Care Drainage	Paved Area Drainage
Balcony Drainage	Shower Drainage
Commercial Drainage	Multi-Residential Drainage
Courtyard / Patio Drainage	Threshold Drainage
Pool and Spa Area Drainage	Wet Area Drainage

Copyright © Stormtech Pty Ltd. Patent 733361. Drawings not to scale, please use dimensions shown. Downloaded 17/12/2025 (please check for updates)



Visit stormtech.com.au
for tools + inspiration.

Phone **1300 653 403**

Email info@stormtech.com.au