

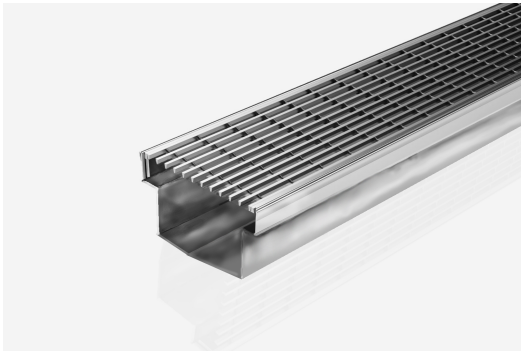


ARCHITECTURAL  
GRATES + DRAINS



# 100TRi50MTL

## Linear Drain



The 100TRi50MTL is a linear drainage system providing a solution for minimum stepdown requirement of 50mm in doorways.

Manufactured from sustainably sourced 316 marine grade stainless steel for durability, hygiene and luxurious visual appeal. This drainage is made to specified length with specified outlet position, featuring Stormtech's standard wedgewire grate (3mm wire/5mm gap).

Please be aware that for a pool installation or installation environment close to a surf beach, you may need to have your stainless steel grates electropolished.

**Code** 100TRi50MTL

**Range** 100

**Grate Style** TR

**Category** Made-to-Length

**Channel Material** Stainless Steel

**Steel Grade** 316

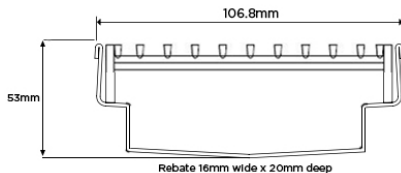
### SPECIFICATIONS + DIMENSIONS

<b>Channel Width</b>	107mm
<b>Channel Depth</b>	53mm
<b>Length(s)</b>	As Required
<b>Outlet Size</b>	DN40, DN50, DN65, DN80

### STORMTECH COLOUR FINISHES



Electroplate finishes subject to natural variation with time and local environment. Factors such as pools/surf beaches may require electropolishing. Contact us for suitability.



Grates longer than 1500mm supplied in sections. Tile Inserts longer than 1200mm supplied in sections. Channels over 3000mm supplied in sections with joiner. +/-2mm tolerance on dimensions.

### PRODUCT APPLICATIONS

Copyright © Stormtech Pty Ltd. Patent 733361. Drawings not to scale, please use dimensions shown. Downloaded 18/04/2026 (please check for updates)



Visit [stormtech.com.au](http://stormtech.com.au)  
for tools + inspiration.

Phone **1300 653 403**

Email [info@stormtech.com.au](mailto:info@stormtech.com.au)