

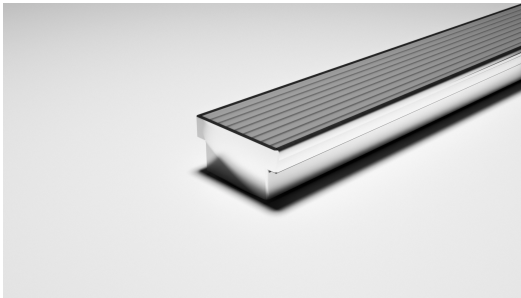


ARCHITECTURAL  
GRATES + DRAINS



# 100AAi50MTL

## Linear Drain



The 100AAi50MTL is a linear drainage system providing a convenient solution for level entry and minimum stepdown requirement of 50mm at hinged door thresholds.

With a channel manufactured from sustainably sourced 316 marine grade stainless steel for durability, hygiene and luxurious visual appeal. This drainage is made to specified length with specified outlet position, featuring Stormtech's Good Design Award winning Wave Grate made from anodized aluminium.

**Code** 100AAi50MTL

**Range** 100

**Grate Style** AA

**Category** Made-to-Length

**Channel Material** Stainless Steel

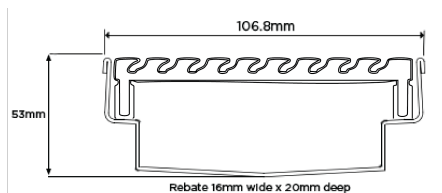
**Steel Grade** 316

Please be aware that for a pool installation or installation environment close to a surf beach, you may need to have your stainless steel channel electropolished.

**Refer to AS3500 for outlet pipe sizes specific to your installation**

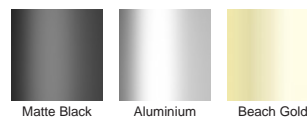
### SPECIFICATIONS + DIMENSIONS

<b>Channel Width</b>	107mm
<b>Channel Depth</b>	53mm
<b>Length(s)</b>	As Required
<b>Outlet Size</b>	DN40, DN50, DN65, DN80



Grates longer than 1500mm supplied in sections. Tile Inserts longer than 1200mm supplied in sections. Channels over 3000mm supplied in sections with joiner. +/-2mm tolerance on dimensions.

### STORMTECH COLOUR FINISHES



Electroplate finishes subject to natural variation with time and local environment. Factors such as pools/surf beaches may require electropolishing. Contact us for suitability.

### PRODUCT APPLICATIONS

- Bathroom Drainage
- Wet Area Drainage
- Aged / Health Care Drainage
- Balcony Drainage
- Courtyard / Patio Drainage
- Paved Area Drainage
- Threshold Drainage

Copyright © Stormtech Pty Ltd. Patent 733361. Drawings not to scale, please use dimensions shown. Downloaded 19/04/2026 (please check for updates)



Visit [stormtech.com.au](http://stormtech.com.au)  
for tools + inspiration.

Phone **1300 653 403**

Email [info@stormtech.com.au](mailto:info@stormtech.com.au)